**technical data**

Supply voltage	380 – 415 V 2N/3N
Supply voltage	220 – 240 V
Frequency	50 / 60 Hz
Maximum power consumption	7.6 kW (4.4 kW)
Fuse protection / power supply	3 x 16 A
Fuse protection / power supply	2 x 16 A
Fuse protection / power supply	1 x 32 A
Weight (incl. accessories/package)	Approx. 25 kg
Surface material	SCHOTT CERAN®
Dimensions (WxDxH)	830 x 515 x 198 mm

cooktop

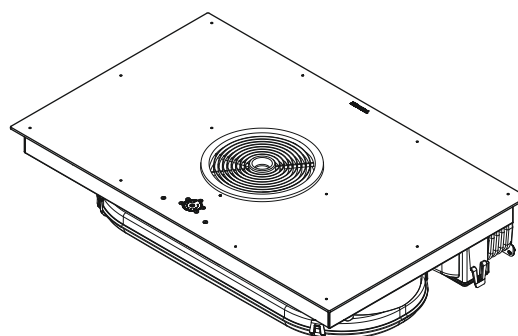
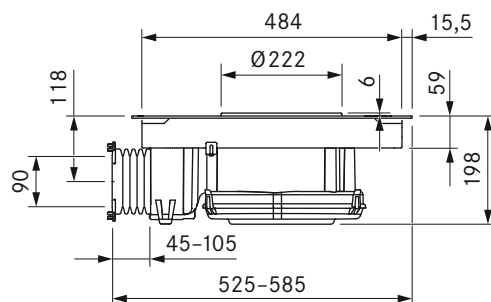
Power levels	1 – 9, P
Front cooking zone dimensions	230 x 230 mm
Front cooking zone power	2100 W
Front cooking zone power setting	3700 W
Back cooking zone dimensions	230 x 230 mm
Back cooking zone power	2100 W
Back cooking zone power setting	3700 W

extraction system

Maximum air volume	658.8 m³/h
Maximum static pressure	375 Pa
Power levels	1 – 9, P
Recirculation connection	650 x 90 mm
Filter medium	Activated charcoal filter with ion exchanger
Material	Filter panel with fine filter
Filter area	2 x 0.4 m²
Service life	Max. 150 h / 1 year

Cooktop product description

- automatic heat up function
- bridging function
- Power setting for all cooking zones
- Timer function
- residual heat display



- pan size recognition
- Pause function
- warming function
- childproofing feature
- safety shut-down
- Power management is only possible at the front or rear on each side

Product description Extraction system

- Energy-saving fan (EC motor)
- Freely adjustable power control
- Automatic cooktop extractor function
- Automatic after-run
- safety shut-down
- Filter service display
- Interface for external devices via Home In or Home Out
- power setting

Add-on product description

- Please note that induction-compatible cookware must be used on induction cooktops
- The connection cable must be provided at the installation site
- Front power socket

Scope of delivery

- Surface induction glass ceramic cooktop with BFIU cooktop extractor
- stainless steel grease filter
- Activated charcoal filter set with ion exchanger
- Flexible duct with fixing screws
- mounting straps
- sealing tape
- glass ceramic scraper
- cable routing clips
- height adjustment plate set
- operating and installation instructions
- drilling template

Accessories

- BFF stainless steel grease filter
- BFIED air inlet nozzle
- BUSAE exhaust air conversion set
- UDB25 sealing tape
- Activated charcoal filter set with BAKFS ion exchanger (x 2)
- UGPI1 grill pan
- BKR830 cooktop frame

Planning instructions

- Basic cooktop extractor system can be combined with the sockets USTF, USTE, USTI, USTG and USTL